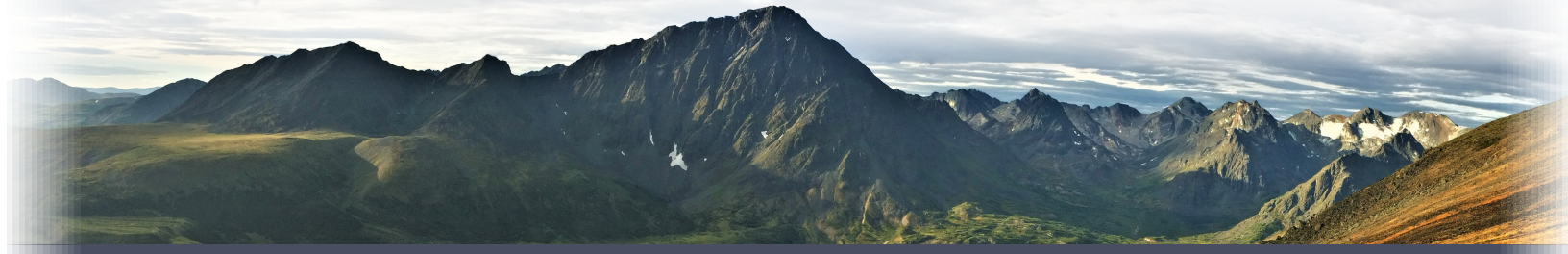




**TRIUMPH
GOLD**

Andalusite Peak

Porphyry-epithermal
Cu-Au-Mo-Ag



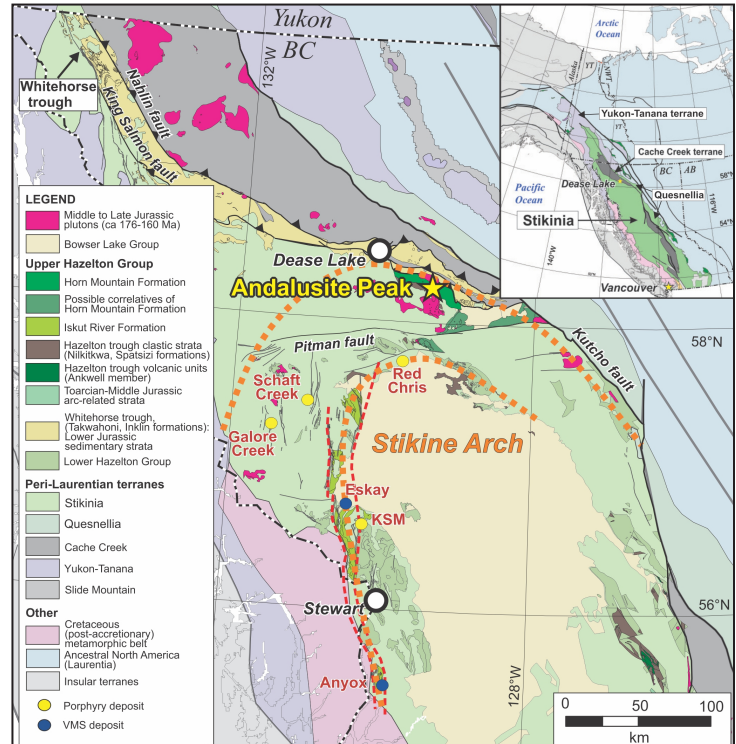
TRIUMPHGOLDCORP.COM

TSX-V: TIG | OTC: TIGCF | FRA: 8N61

INTRODUCTION

The Andalusite Peak Property (3,166 Ha) is in northern BC southeast of Dease Lake. The property is strategically situated within the 'Golden Horseshoe' area of Northern BC, host to several significant porphyry deposits (e.g., KSM, Galore Creek, Schaft Creek, Red Chris, Kemess).

The property is underlain by Early to Middle Jurassic volcanic stratigraphy and Early to Late Jurassic Intrusions. Copper, gold, silver, and molybdenum (Cu-Au-Ag-Mo) mineralization consists of bornite, chalcocite, chalcopyrite, malachite, azurite, and molybdenite. Mineralization is commonly structurally controlled associated with epidote, chlorite, quartz and calcite alteration.



EXPLORATION

The Property was acquired in 2017 through staking. The 2021 exploration program was focused on identifying mineralizing controls and expanding and connecting mineralized trends.

